

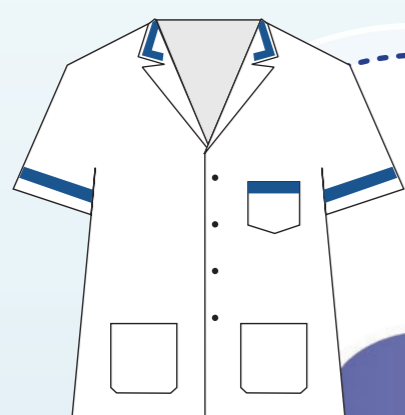
COME RICONOSCERE IL NOSTRO PERSONALE OSPEDALIERO



Azienda
Ospedaliera
Universitaria
Careggi

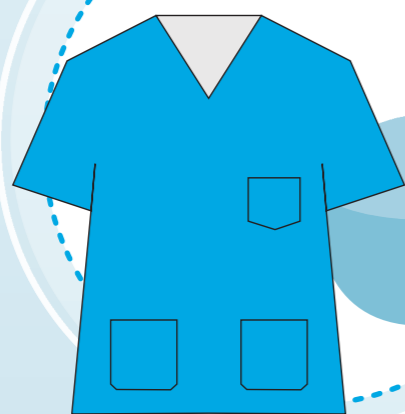
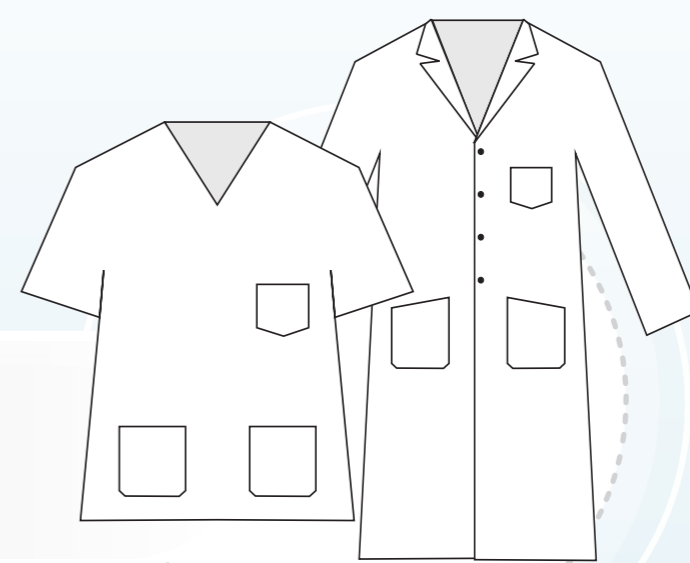


SST
Servizio
Sanitario
della
Toscana



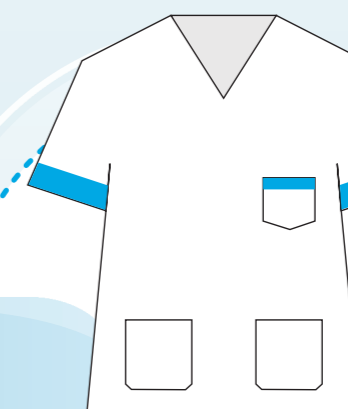
**COORDINATORI
INFERMIERISTICI**

MEDICI



**INFERMIERI
*pediatrici***

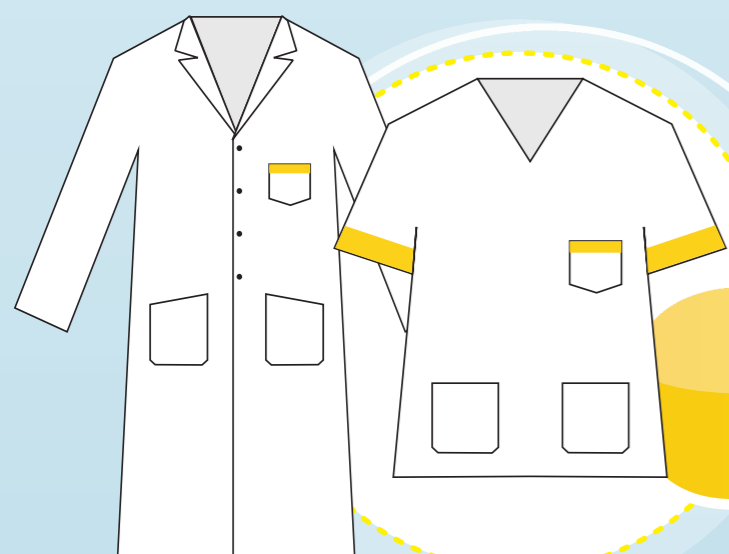
INFERMIERI



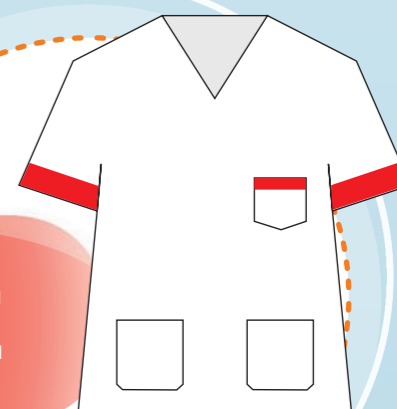
**INFERMIERI
*generici***



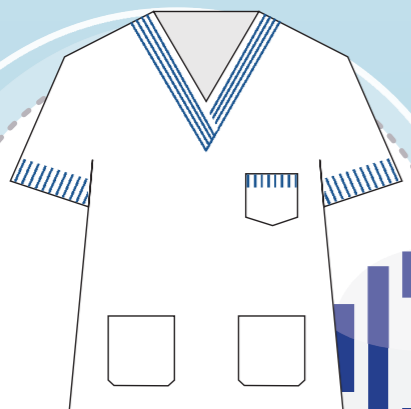
TECNICI SANITARI



OSTETRICHE



OTA - OSS



AUSILIARI



**PERSONALE
DELLA RIABILITAZIONE**



AMMINISTRATIVI

